

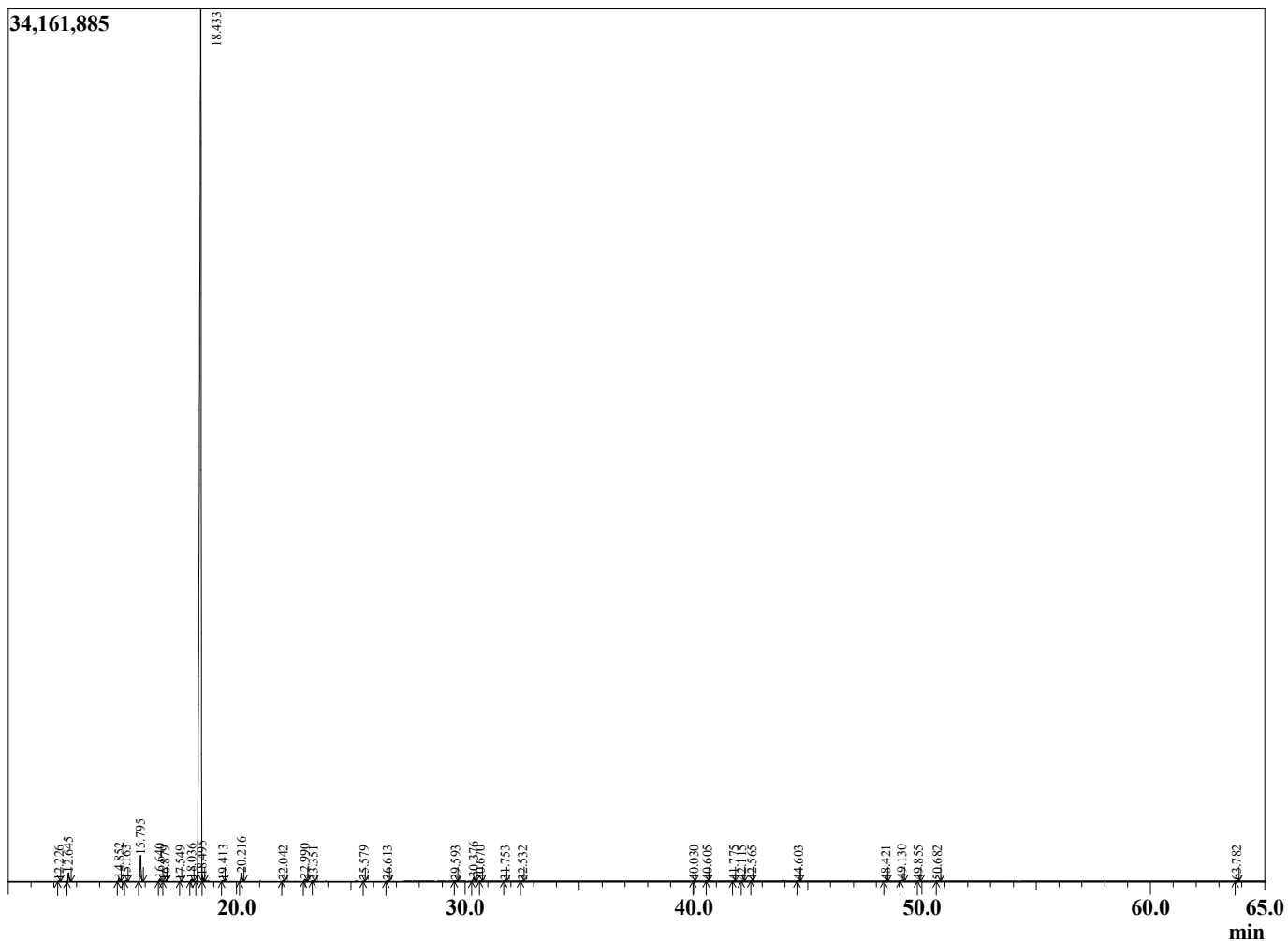
Sample Information

Sample Type : Essential Oil
 Sample Name : Citrus clementina
 Injection Volume : 0.10

Clementine
 Lot# ITD15-DE
 Country: Italy



Chromatogram Citrus clementina



R.Time	Name	Area%
12.226	alpha-Thujene	0.03
12.645	alpha-Pinene	0.58
14.852	Sabinene	0.21
15.163	beta-Pinene	0.07
15.795	Myrcene	1.76
16.640	Octanal	0.18
16.879	alpha-Phellandrene	0.03
17.549	Unidentified	0.01
18.036	para-Cymene	0.17
18.433	Limonene	95.16
18.495	beta-Phellandrene	0.19
19.413	(E)-beta-Ocimene	0.07
20.216	gamma-Terpinen	0.62
22.042	Terpinolene	0.03
22.990	Linalool	0.15
23.351	Nonanal	0.01
25.579	Unidentified	0.01
26.613	Citronellal	0.04
29.593	alpha-Terpineol	0.04
30.376	Decanal	0.31
30.670	Octyl acetate	0.01
31.753	Unidentified	0.01
32.532	Unidentified	0.01
40.030	Citronellyl acetate	0.01
40.605	Neryl acetate	0.01
41.775	alpha-Copaene	0.02
42.115	Unidentified	0.01
42.565	Unidentified	0.01
44.603	trans-beta-Caryophyllene	0.02
48.421	Germacrene D	0.02
49.130	Valencene	0.10
49.855	(E,E)-alpha-Farnesene	0.03
50.682	delta-Cadinene	0.03
63.782	alpha-Sinensal	0.03
		100.00